



**transport**

---

Department:

Transport

**PROVINCE OF KWAZULU-NATAL**

# **BRIEFING NOTES FOR THE BETTERMENT AND REGRAVELLING OF L2359 FROM (KM 00+000 – KM8+000)**



**transport**

Department:

Transport

PROVINCE OF KWAZULU-NATAL

**TENDER NUMBER: CONTRACT NO. ZNB00770/00000/00/VRY/INF/21/T: BETTERMENT AND REGRAVELLING OF L2359 (KM 0+000 – KM 8+000) (8 KM) UNDER THE VRYHEID AREA OFFICE**

**Tender documents are available at no cost in electronic format downloadable from KZN Department of Transport website [http://www.kzntransport.gov.za/tenders\\_bids/index.htm](http://www.kzntransport.gov.za/tenders_bids/index.htm)**



**transport**

Department:

Transport

PROVINCE OF KWAZULU-NATAL

# WELCOME & INTRODUCTION



## ENQUIRES

Queries relating to issues arising from these documents may be addressed to the following:

ALL ENQUIRIES				
	Project	Contact Person	Email Address	Telephone
Technical	L2359	Mr. T.M. Mthethwa	<a href="mailto:Thamsanqa.Mthethwa@kzntransport.gov.za">Thamsanqa.Mthethwa@kzntransport.gov.za</a>	+27 34 9800 401
		Mr.X.S Khanyile	<a href="mailto:Xolani.Khanyile@kzntransport.gov.za">Xolani.Khanyile@kzntransport.gov.za</a>	+27 34 9800 401
SCM		Noreen Mdluli	<a href="mailto:Noreen.Mdluli@kzntransport.gov.za">Noreen.Mdluli@kzntransport.gov.za</a>	+27 34 9800 401



**transport**

Department:

Transport

PROVINCE OF KWAZULU-NATAL

## IMPORTANT DATES

TENDER CLOSING DATE	11H00 ON THURSDAY, 28 October 2021
---------------------	------------------------------------



# Overview

## TENDER SECTION

PART T1: TENDERING PROCEDURES

PART T2: RETURNABLE DOCUMENTS

## CONTRACT SECTION

PART C1: AGREEMENTS AND CONTRACT DATA

PART C2: PRICING DATA

PART C3: SCOPE OF WORKS

PART C4: SITE INFORMATION



**transport**

Department:

Transport

PROVINCE OF KWAZULU-NATAL

# PART T1: TENDERING PROCEDURES



## T1.1: TENDER NOTICE AND INVITAION TO TENDER

**CONTRACT NO. ZNB00770/00000/00/VRY/INF/21/T: BETTERMENT AND REGRAVELLING OF ROAD OF L2359 FROM KM 0.00 TO 8.00 KM IN THE VRYHEID AREA.**

The Province of KwaZulu-Natal, Department of Transport, invites tenders from contractors, experienced in roadworks, for the : **BETTERMENT AND REGRAVELLING OF ROAD OF L2359 FROM KM 0.00 TO 8.00 KM IN THE VRYHEID AREA.** This project is in the province of KwaZulu-Natal in the Zululand district municipality and Abaqulusi local municipality. The duration of the project is **6 months**.

Only tenderers that satisfy the eligibility criteria stipulated in clause C.2.1 of the Tender Data are eligible to have their tenders considered.

It is estimated that tenderers must have a CIDB contractor grading designation **4CE or higher**.

Preferences are offered to tenderers who comply with the requirements stipulated in clause C.3.11.1 of the Tender Data.

Documents will be made available on [www.kzntransport.gov.za](http://www.kzntransport.gov.za) Documents will be available from 23 September 2021. If Bidder are failing to download Tender document, are welcome to come with their USB at **Department of Transport at Cost Centre Vryheid, 89 Van Riebeeck Street, Vryheid 3100.**

There will be NO Tender Briefing for this tender but briefing notes will be available for downloading with the tender document to aid tenders in completing the documents.

Refer to  
pg. T4





**transport**

Department:

Transport

PROVINCE OF KWAZULU-NATAL

# **TENDERING PROCEDURES**

## **T1.2: TENDER DATA**



**transport**

Department:

Transport

PROVINCE OF KWAZULU-NATAL

## CONDITIONS OF TENDER

The conditions of tender are the standard conditions of tender contained in Annex C of the Construction Industry Development Board Standard for Uniformity in Engineering and Construction Works Contracts, published in Government Gazette No. 42622 dated 8 August 2019.



## TENDER DATA

The standard conditions of tender make several references to the tender data for details that apply specifically to this tender. The tender data shall have precedence in the interpretation of any ambiguity or inconsistency between the tender data and the standard conditions of tender.

CLAUSE NUMBER	TENDER DATA
	<p>The Employer is The KZN Department of Transport:</p> <p><b>The Employer's address for communication relating to this project is:</b></p> <p><b>KZN Department of Transport Area Office VRYHEID</b> <b>89 VAN RIEBEEK STREET VRYHEID</b> <b>3100</b></p>



TENDER DATA

CLAUSE NUMBER	TENDER DATA
C2.1	<p>Only those tenderers who satisfy the following criteria are eligible to submit tenders.</p> <p>a) Contractor grading designation equal to or higher than a 4 for a CE</p> <p>b) Registered on the Central Supplier Database</p>



TENDER DATA

C.2.13	Tender offers shall be submitted as an original hard copy on No 89 VAN RIEBEEK STREET VRYHEID 3100
C.2.15	The closing time for submission of Tender Offers is: <b>11:00 on Thursday 28 October 2021</b>



## TENDER DATA

CLAUSE NUMBER	TENDER DATA
C2.16	The tender offer validity period is <b>12 weeks</b> from the closing date/ time for submission of tenders.



## TENDER DATA

CLAUSE NUMBER	TENDER DATA
C3.4	<p><b>Tender Opening</b></p> <p>The time and location for opening of the tender submissions are:</p> <p>Time: <b>11H00</b> Date: <b>Thursday, 28 August 2021</b></p> <p>Location / Venue: KZN Department of Transport, The Area Vryheid Office , 89 Van Reibeeck Street, Vryheid.</p>

**TENDER DATA**

<b>CLAUSE NUMBER</b>	<b>TENDER DATA</b>
C.3.13	<p>(e) The legal requirements for acceptance of the tender offer are:</p> <p>(i) The Tenderer or any of its principals is not listed on the register of Tender Defaulters in terms of the Prevention and Combating of Corrupt Activities Act of 2004 as a person prohibited from doing business with the public sector.</p> <p>(ii) the Tenderer has not abused the Employer's Supply Chain Management System.</p> <p>(iii) The Tenderer has indicated and declared whether a spouse, child or parent of the Tenderer is in the service of the State.</p> <p>(iv) The Employer is satisfied that the Tenderer or any of his principals have not influenced the tender offer and acceptance</p>





# PART T2: RETURNABLE DOCUMENTS

- (a) Returnable Schedules in T2.2.
- (b) C1.1 Form of Offer and Acceptance, C1.1.1: Offer, on page C3.
- (c) Contract Specific Data Provided by the Contractor in C1.2.3.
- (d) Pricing Data in C2.2: Bill of Quantities.



## T2.2 : RETURNABLE SCHEDULES

### Notes to tenderer:

1. **Returnable schedules have been based on the CIDB Standard for Uniformity in Construction Procurement and incorporates National Treasury requirements within them(SBD Forms).** Returnable schedules are separated into the following categories:
  - i) Forms, certificates and schedules for completion by the tenderer for use in the quantitative and qualitative **evaluation of the tender** C1.1 Form of Offer and Acceptance, C1.1.1: Offer, on page C3.
  - ii) A list of other returnable documents for completion by the tenderer and which will subsequently be **incorporated into the contract**
2. Failure to fully complete the relevant returnable documents shall render such a tender offer to be **declared non-responsive**. SBD forms with a water mark not applicable should be ignored
3. Tenderers shall note that their signatures appended to each returnable form represents a declaration that they **vouch for the accuracy and correctness of the information provided**, including the information provided by candidates proposed for the specified key positions.
4. Notwithstanding any check or audit conducted by or on behalf of the Employer, the information provided in the returnable documents is accepted in good faith and as justification for entering into a contract with a tenderer. If subsequently any information is found to be incorrect such discovery shall be taken as wilful misrepresentation by that tenderer to induce the contract.



RETURNABLE  
SCHEDULES

## T2.2 RETURNABLE SCHEDULES

A	CERTIFICATE OF ATTENDANCE AT CLARIFICATION MEETING .....	T13
B	RECORD OF ADDENDA TO TENDER DOCUMENTS .....	T14
C	COMPULSORY ENTERPRISE QUESTIONNAIRE .....	T15
D	STANDARD BIDDING DOCUMENTS .....	T16
	SBD 1: INVITATION TO BID .....	T16
	SBD 4: DECLARATION OF INTEREST .....	T18
	SBD 5: THE NATIONAL INDUSTRIAL PARTICIPATION PROGRAMME ( <i>Not Applicable</i> ) .....	T22
	SBD 6.1: PREFERENCE POINTS CLAIM FORM IN TERMS OF THE PREFERENTIAL PROCUREMENT REGULATIONS 2017 .....	T24
	SBD 6.2: DECLARATION CERTIFICATE FOR LOCAL PRODUCTION AND CONTENT FOR DESIGNATED SECTORS ( <i>Not Applicable</i> ) .....	T28
	SBD 8: DECLARATION OF BIDDER'S PAST SUPPLY CHAIN MANAGEMENT PRACTICES.....	T34
	SBD 9: CERTIFICATE OF INDEPENDENT BID DETERMINATION .....	T36
E	B-BBEE STATUS LEVEL VERIFICATION CERTIFICATE .....	T38
F	CERTIFICATE OF AUTHORITY FOR SIGNATORY.....	T39
G	CONSTRUCTION EXPERIENCE .....	T40
H	KEY PERSONNEL.....	T41
I	CONSTRUCTION EQUIPMENT.....	T44
J	PROPOSED SUBCONTRACTORS .....	T45
K	PARTICIPATION IN JOB CREATION USING LOCAL LABOUR .....	T46
L	HEALTH AND SAFETY DECLARATION .....	T48
M	DEVIATIONS AND QUALIFICATIONS .....	T50
N	SCHEDULE OF ALTERNATIVE TENDERS .....	T51
O	TECHNICAL PROPOSAL ( <i>Not Applicable</i> ).....	T52



**transport**

Department:

Transport

PROVINCE OF KWAZULU-NATAL

# **PART C1: AGREEMENTS AND CONTRACT DATA**



## PART C1: AGREEMENTS & CONTRACT DATA

### C1.1.1 Form of Offer

- Ensure that **amount in words** corresponds with **amount in figures** on the Pricing Schedule
- Ensure that Form of Offer is signed by **authorised person** and **one witness**.

Refer to pg.  
C3 – C6

### C1.1.2 Form of Acceptance

- Ensure that Form of Acceptance is signed by **authorised person** and **one witness**.
- Ensure that Schedules of Deviations is fully completed, signed by **authorised person** and **one witness**

**C.1.3.1 CONTRACT DATA: INFORMATION PROVIDED BY THE EMPLOYER**

Clause	Contract Data	
SCC1.1.1.14	The time for achieving Practical Completion is <b>6 months</b> from the date of commencement of the Works, including non-working days and special non-working days.	
1.2.1.2	<b>Address of Employer:</b>	
	Physical:	Postal
	89 Van Riebeeck Street,	P/Bag X9301
	Vryheid	Vryheid.
	3100	3100
SCC 4.1.1		
SCC 5.3.1 and 5.3.2	The contract participation goal for local labour content is <b>2,0%</b> .	
5.13.1	The date of commencement of the Works shall be <b>within 28 days</b> , after the Commencement Date.	



### C.1.3.2 CONTRACT DATA: INFORMATION PROVIDED BY THE EMPLOYER

Clause	Contract Data
5.14.1	The requirements for achieving Practical Completion are as stated in General Conditions of Contract 2015.
SCC 6.2.1	The security to be provided by the Contractor shall be: <b>Fixed Performance Guarantee of 8% of the first One Million Rand plus 3,5% of the balance of the Contract Sum.</b>
6.10.3	A retention guarantee in lieu of a cash retention is permitted.
8.6.1.3	The limit of indemnity for liability insurance is <u>R10 000 000,00 (ten million Rand only)</u> for any single liability claim. Liability insurance shall include spread of fire risk



### C.1.3.2 CONTRACT DATA: INFORMATION PROVIDED BY THE EMPLOYER

Clause	Contract Data
<b>10.</b>	<b>CLAIMS AND DISPUTES</b>
10.5.2	Disputes shall be referred to ad-hoc adjudication.
10.5.3	The number of Adjudication Board members to be appointed shall be one.
10.8.1	Unresolved disputes shall be determined by court proceedings.





**transport**

Department:

Transport

PROVINCE OF KWAZULU-NATAL

## PART C2: PRICING DATA



**transport**

Department:  
Transport  
PROVINCE OF KWAZULU-NATAL

## C2.2 : BILL OF QUANTITIES

Refer to pg.  
C29– C41

**refer to Schedule A:  
Roadworks**



**transport**

Department:

Transport

PROVINCE OF KWAZULU-NATAL

# PART C3: SCOPE OF WORKS



## C3 SCOPE OF WORKS

Refer to pg. C44

- This section covers matters that relate to the project as a whole. Matters covered by the General and/or Particular Conditions of Contract are not repeated in this section, except to provide more detailed information



### C3.1 STANDARD SPECIFICATIONS

Refer to pg. C43

The Standard Specifications on which this contract is based are the '**Standard Specifications for Road and Bridge Works for South African Road Authorities (COTO), Draft Standard (DS), October 2020**'.



## C3.2 PROJECT SPECIFICATIONS

### PART A: GENERAL

#### 1.1 Employer's objectives

#### 1. DESCRIPTION OF THE WORKS

The objective of the project is to re-gravel L2359 from km 0+000 to km 8+000. There is no gravel left on the current surface and slippery when it rains the road requires a new gravel surface layer to be placed. The project will include the maintenance of the current stormwater infrastructure and additional pipe culverts will be inserted where required.

Refer to  
pg. C44



## C3.2 PROJECT SPECIFICATIONS

### PART A: GENERAL

#### 1.2 Location of the Works

Local Road L2359 is located in KZ 263 within DC26, where the start of the project is at intersection of P46 and L2359 in Enhlangwini area under Abaqulusi Local Municipality.

Refer to  
pg. C44



## C3.2 PROJECT SPECIFICATIONS

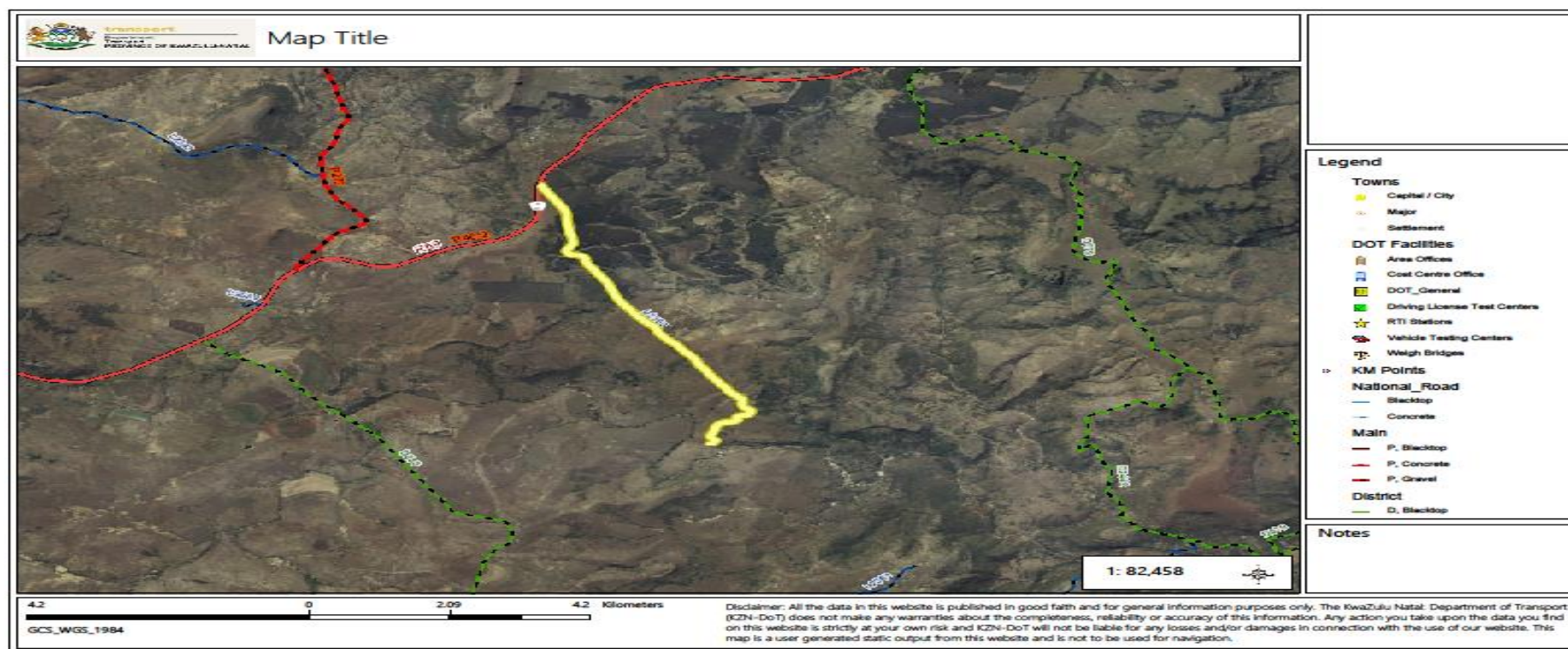
### PART A: GENERAL

## 1.2 Location of the Works .....

L2359

27.24'43,76°S

30.42'12,08°E







## C3.2 PROJECT SPECIFICATIONS

### PART A: GENERAL

#### 1.3 Overview of the Works

The Work to be carried out includes the following:

Refer to  
pg. C44

The Work to be carried out includes the following:

- Establishment and De-establishment
- Provision of traffic accommodation facilities,
- Roadbed preparation,
- Dumping of gravel material,
- Pavement layers of 150 mm gravel compacted 95 % mod AASH
- Continuous quality control over materials and workmanship, and compliance with the Particular Specifications with regard to environmental management and occupational health and safety, during all the above construction activities,
- Clearing of road reserve
- Finishing and tidying of the road and road reserve



## C3.2 PROJECT SPECIFICATIONS

### PART A: GENERAL

#### 1.4 Extent of the Works

A brief detail of the works for which this specification is applicable is as follows:  
Roadworks

(a) The design pavement structure is summarized in the following tables:-

Refer to  
pg. C44

Layer	Thickness (mm)	TRH 14 Code	Description	Compaction (%)
Gravel Wearing Course	150	-	Gravel selected from road prism or local borrow pits	95% Mod AASHTO



## C3.2 PROJECT SPECIFICATIONS.....

### PART A: GENERAL

#### 1.4 Extent of the Works

##### (b) Material sources and quantities

Refer to  
pg. C44

Description	Source	Approximate quantity
Gravel Wearing Course 1 x 150mm	Gravel selected from road prism or local borrow pits	77044m <sup>3</sup>



## C3.2 PROJECT SPECIFICATIONS

### PART A: GENERAL

#### 1.5.1 Access to the Site

Access to the site can be obtained from L2359 in the Abaqulusi Local Municipality (KZ263). Throughout the duration of the contract, Roads shall be shared with other contractors engaged by the KwaZulu-Natal Department of Transport on the identified projects whose construction activities may affect access from time to time. The Contractor shall therefore be required to liaise on an ongoing basis with these other contractors with respect to access related matters throughout the duration of the contract.

Refer to  
pg. C44



## C3.2 PROJECT SPECIFICATIONS

### PART A: GENERAL

#### 1.5.6 Material sources, spoil and stockpile areas

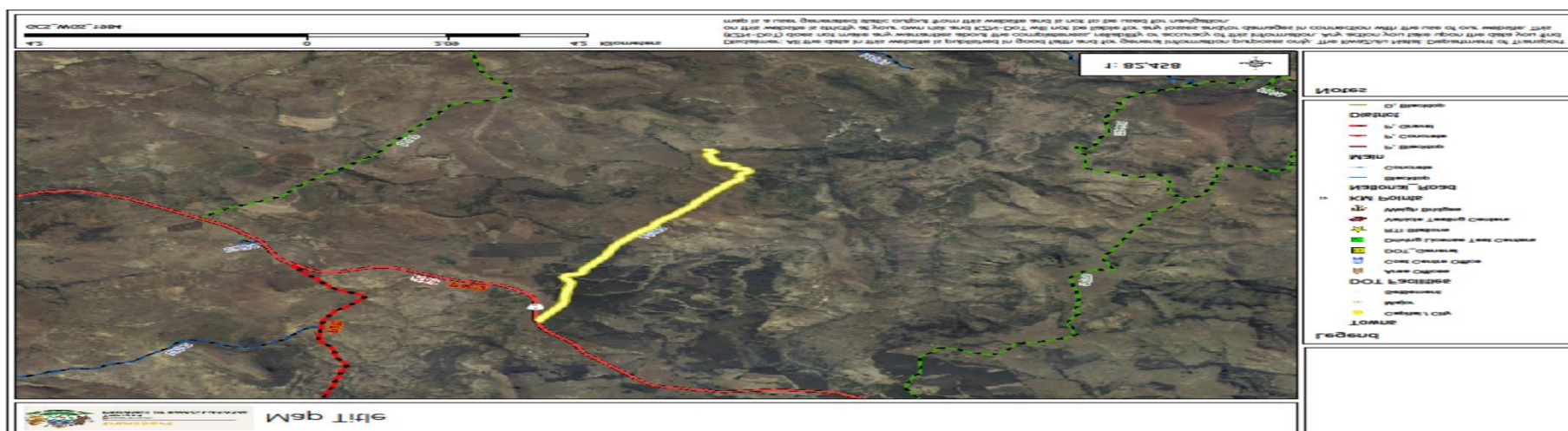
Refer to  
pg. C45

The Borrow pit for L2359 is located along the road L2359. The borrow pit is 15 km away from L2359 kilometer 00+000

L2359

27.24'43,76°S

30.42'12,08°E





## C3.2 PROJECT SPECIFICATIONS

### PART A: GENERAL

#### 1.7 Testing of materials

The Contractor shall arrange for all tests required for process control to be done by a laboratory acceptable to and approved by the Engineer.

Laboratory must operate under the auspices of a SANAS accreditation and with the necessary quality assurance plans.

Refer to  
pg. C46



## C3.2 PROJECT SPECIFICATIONS

### PART A: GENERAL

#### 1.10 Contractor's campsite (Project Specific) f materials

The Contractor shall make his own arrangements for the provision of his campsite and housing for construction personnel but the chosen site shall be subject to the approval of the Employer's Agent and the local authorities.

The standard of the Contractor's camp, offices, accommodation, ablution, and other facilities must comply with the requirements of all local authority, environmental and industrial regulations concerned. In establishing and maintaining his campsite, due cognisance is to be taken of the requirements of clause A1.3.3 of the Standard Specifications for Road and Bridge Works for South African Road Authorities (COTO), Draft Standard (DS), October 2020.

Refer to  
pg. C47



## C3.2 PROJECT SPECIFICATIONS

### PART A: GENERAL

#### 1.13 Construction programme

The Contractor shall submit a detailed time programme in accordance with clause 5.6.2 of the General Conditions of Contract 2015, clause A1.2.7 of the Standard Specifications for Road and Bridge Works for South African Road Authorities (COTO), Draft Standard (DS), October 2020.

Refer to  
pg. C48





## C3.2 PROJECT SPECIFICATIONS

### PART A: GENERAL

#### 5.7 Daily records

A site diary is to be compiled jointly by the Construction Manager and the Employer's Agent's Representatives on site and is to be agreed and signed by both parties. The original signed copy is to be retained by the Employer's Agent's Representative.

The Contractor is to keep daily records of people and equipment on site in a format to be agreed by the Employer's Agent's Representative, and is to provide copies to the Employer's Agent's Representative when requested.

Refer to  
pg. C53



## C3.2 PROJECT SPECIFICATIONS

### PART A: GENERAL

#### 5.8 Payment certificates

Details of measurements, proof of payment for items contained in provisional sums and prime cost sums, proof of ownership of Plant and materials on site and documentation pertaining to contract price adjustment and special materials, are required as substantiation of claims for payment.

Refer to  
pg. C53



## C3.2 PROJECT SPECIFICATIONS.....

### PART A: GENERAL

#### 5.11 Submission of reports

Refer to  
pg. C69

The contractor shall submit monthly reports in accordance with the specifications in Part E:  
Expanded Public Works Programme



## PART C4: SITE/BACKGROUND INFORMATION

**Main Road P46** is located in the Enhlangwini area under Abaqulusi Municipality and within the Zululand District Municipality. L2359 is 8.3 kilometres in length and is a gravel surface .

L2359 is located in the North East of KwaZulu Natal. Local road L2359 traverses through mountainous terrain and is surrounded by open fields and villages. Section under consideration from km 0.00 to km 8,00 serves the community of approximately 500 people in wards 6 under the leadership of **Cncllr Mr Nkosi** in Zulu Tribal Authority.

Position	Lat	Lon
Start km 0.00	27.24'43,76°S	30.42'12.08°E
End km 8.00	27.23'6,46°S	30.38'19,76°E



## Coordinates

### Position

### Lat

### Lon

Start km 0.00

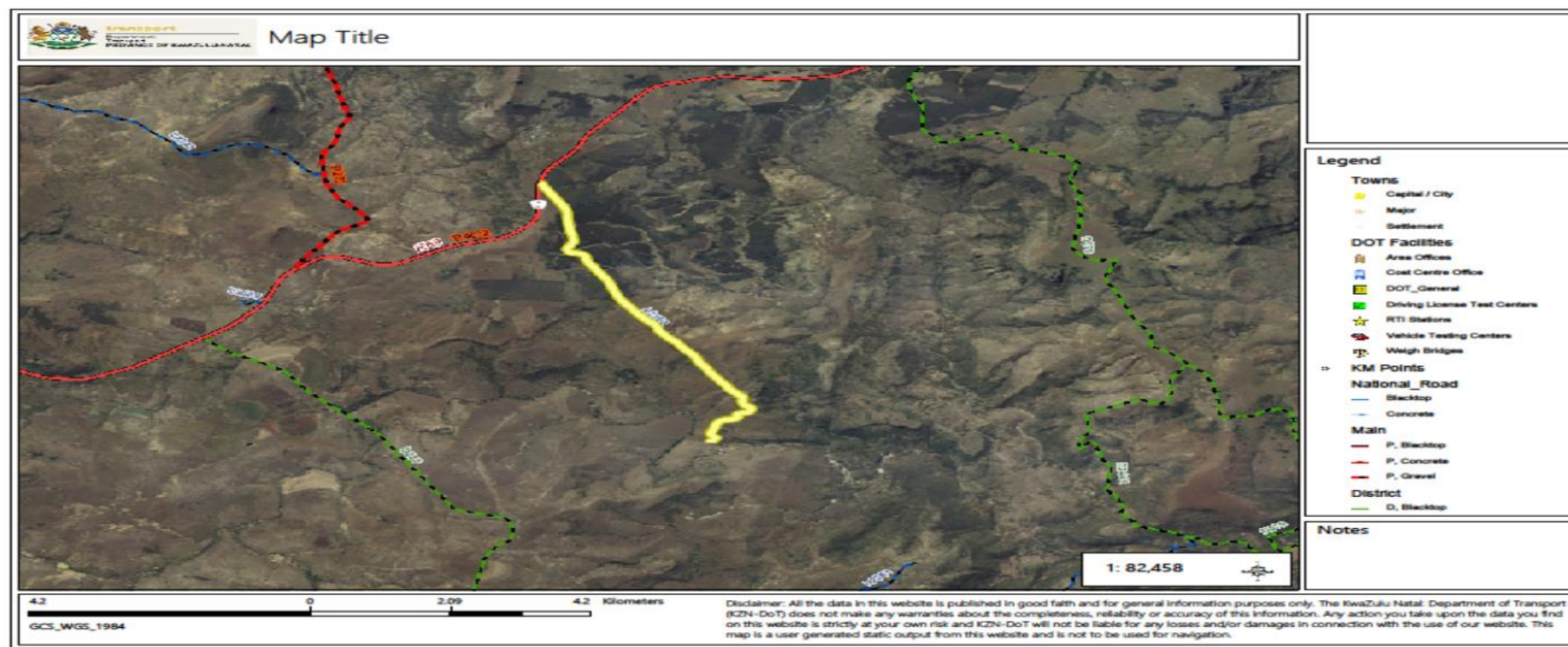
27.24'43,76°S

30.42'12.08°E

End km 8.00

27.23'6,46°S

30.38'19,76°E





**transport**

Department:  
Transport  
PROVINCE OF KWAZULU-NATAL

# END/ THANK YOU

**GROWING  
KWAZULU-NATAL  
TOGETHER**